



Applications

LED Retrofit Kits are perfect for installations where the existing exit sign is still serviceable but consumes far too much energy due to its high wattage lamps. Screw-in retrofit kits are as simple to install as changing a lamp, thus minimizing labor costs.

Dimensions

W = 3/4"

L = 1 1/12"

H = 4 3/4" (add 1/4" when using adapters)

NXRS Series Exit Sign Retrofit Kits – Screw-In Installation

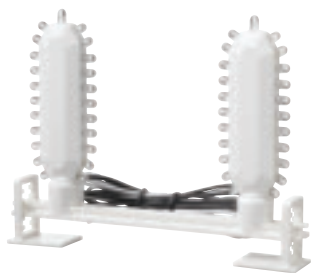
- Use for 120V applications only
- Consumes only 2.8W total per kit
- Designed to fit directly into candelabra base sockets
- Includes socket adapters to fit intermediate base or bayonet base sockets
- LED module height is 4 3/4" (add 1/4" when using adapters)
- ETL Listed

Ordering Information

Catalog Number	Mounting Type	LED Color
NXRSR	Screw-In	Red LED

Electrical Data

Lamps Screw-in lamps designed to fit directly into candelabra base sockets • Includes socket adapters to fit intermediate base or bayonet base sockets • LED module height is 5 1/8" (add 1/4" when using adapters)



Applications

LED Retrofit Kits are perfect for installations where the existing exit sign is still serviceable but consumes far too much energy due to its high wattage lamps. Hard-wire retrofit kits are especially useful in 277V applications or where the local authority requires a more permanent conversion.

Dimensions

W = 1"

L = adjustable 4" to 7"

H = adjustable 5" to 5 1/2"

NXRH Series Exit Sign Retrofit Kits – Hard-Wire Installation

- Use for 120V or 277V applications
- Consumes only 2.8W total per kit
- LED modules can be repositioned to optimize sign uniformity
- Kits come complete with mounting hardware
- LED module height is adjustable
- ETL Listed

Ordering Information

Catalog Number	Mounting Type	LED Color
NXRHR	Hard-Wire	Red LED

Electrical Data

Lamps Kit comes complete with mounting hardware • LED modules can be repositioned along mounting bracket to optimize sign uniformity • LED module height is adjustable

