

## ADJUSTABLE LED LUMINAIRES

**Aculux**<sup>®</sup>  
Precision Recessed Lighting

The broadest adjustable  
precision LED lighting  
offering



# Aculux LED

## Precision Lighting

### The Broadest Adjustable LED Offering

The Aculux brand is redefining precision lighting with energy-efficient, versatile, low wattage LED fixtures. The performance approximates a 50 watts MR16 while consuming only 20 watts. The LED fixtures are compatible with all the new 3 1/4" trim offering and have the same features as the newly redesigned 3 1/4" fixtures — **Acu-Aim™** Optics, **Tru-Line™** Installation and **Pro-VI™** Bar Hangers to name a few. The unique interchangeable beam optics provide the lighting designer with the ultimate flexibility from fixture-to-fixture.

#### Fixtures

- 3 1/4" Round
- 3 1/4" Square

#### Color Temperatures

- 3000K
- 3500K
- 4100K

#### Trim/Reflector Styles

##### Round



Trim Ring



Self-Flanged

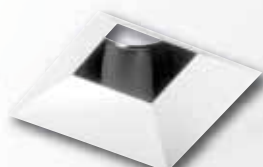


Flush Mount

##### Square



Self-Flanged



Flush Mount

#### Driver

- Universal 120V-277V solid state driver with reverse phase dimming

#### Interchangeable Optics



15° Spot

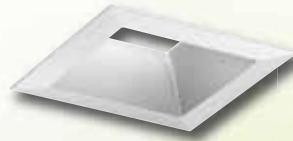
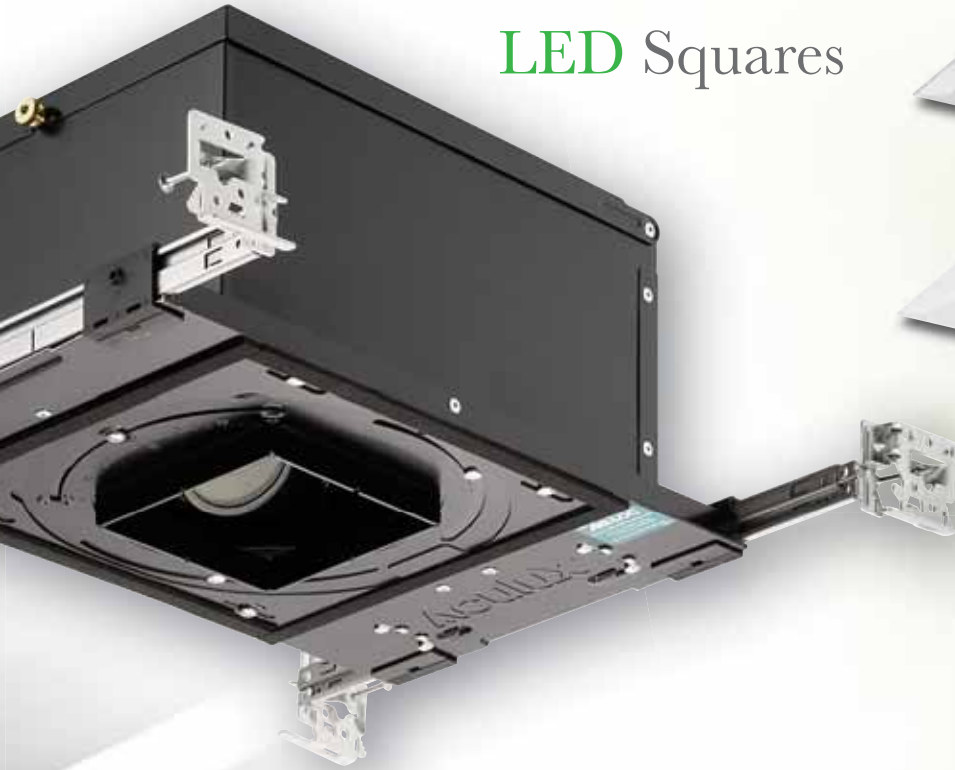


24° Narrow Flood



35° Flood

## LED Squares



Downlight



Adjustable



Pinhole



Wall Wash

## LED Rounds



Downlight



Adjustable



Pinhole



Wall Wash



**juno**<sup>®</sup>  
Recessed and Trac Lighting

**indy**<sup>™</sup>  
Architectural Recessed Lighting

**Alfa**<sup>™</sup>  
Decorative Lighting Systems

**AccuLite**<sup>™</sup>  
Commercial and Industrial Lighting

**AcuLUX**<sup>®</sup>  
Precision Recessed Lighting

**NaviLite**<sup>®</sup>  
Exit and Emergency Lighting

**DanaLite**  
Architectural Linear Lighting

1300 South Wolf Road • Des Plaines, IL 60018  
PHONE (847) 827-9880 • FAX (847) 827-2925 • [junolightinggroup.com](http://junolightinggroup.com)

**Regional Offices & Warehouses:**  
California, Georgia, Illinois, Indiana, Pennsylvania, Texas, Ontario CN



AcuLUX is a registered trademark of Juno Lighting, LLC.  
Products shown in this brochure are covered by U.S. and  
international patents and patents pending.  
Specifications subject to change without notice.  
© 2010 JUNO LIGHTING, LLC.

Printed in U.S.A. LIT-ACULUX-LED-SZL 9/10