

WARNING: INSTALL IN DRY LOCATIONS ONLY. This fixture should only be powered by DanaLite brand DLD Series Class 2, 24VDC Drivers. Use of non-DanaLite Drivers may damage fixture and void warranty. See table below for wattage capacity of Drivers or spec sheet for more detailed information.

IMPORTANT SAFETY INSTRUCTIONS

1. Read all of these instructions before starting installation.
2. Keep these instructions in a safe place for future reference.
3. Only qualified electricians in accordance with local codes should install these fixtures.
4. De-energize electrical circuit at circuit breaker prior to installation process. Always ensure power is off before making any changes to installation.
5. The fixture is not user serviceable. Do not open fixture.

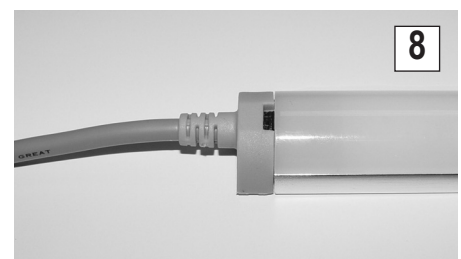
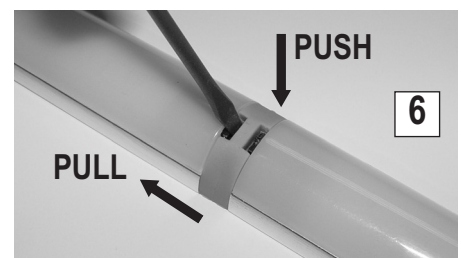
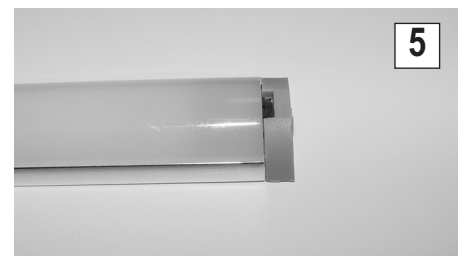
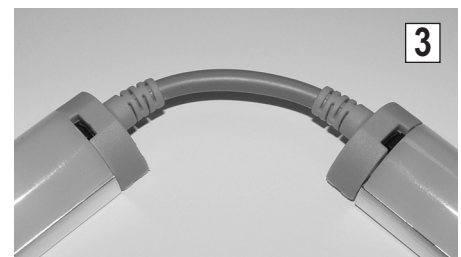
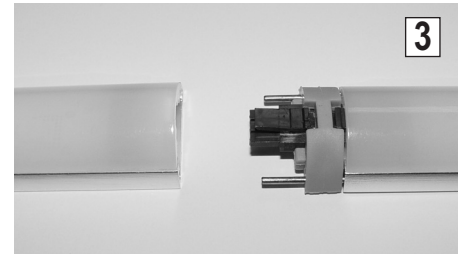
SAVE THESE INSTRUCTIONS

INSTALLATION

1. DL101-P POWER CABLE is 118 inches long and can be field shortened. To add longer splice wire see spec sheet for maximum lengths allowed.
2. Install first fixture module to mounting surface either with screws provided or with screws appropriate to your particular application. Leave room at the start of the fixture to allow plugging in of the POWER CABLE later.
3. Continue to mount additional fixture modules in a secure fashion while at the same time connecting each together with END TO END CONNECTORS (DL102-EE) or FLEX CONNECTORS (DL102-FLX2 or DL102-FLX37) as the installation requires. All CONNECTORS should be completely seated in fixtures. You should feel a “snap” and/or hear a “click” signaling a good connection.
4. When using FLEX CONNECTORS avoid straining the connection by leaving a little bit of slack in the cable. This is especially important when making bends of 90 degrees or tighter.
5. Insert a DL101-E END CAP into the end of the last fixture module of the installation.
6. To remove a CONNECTOR or END CAP use a small-blade screwdriver or similar blunt tool to depress the black catch while simultaneously pulling CONNECTOR out from fixture. Do not use a sharp object.
7. Install DRIVER following instructions packaged with DRIVER.
8. Insert CONNECTOR of DL101-P into end of first fixture module. Re-inspect installation to ensure secure mounting and tight connections.
9. Re-energize electrical circuit and switch driver ON. Fixtures should light.

Each 12” fixture module consumes a maximum of 6 watts of power and each 6” fixture module consumes a maximum of 3 watts. Make sure you have selected a DanaLite brand DLD Series Class 2, 24VDC Driver sufficient to drive the number of fixtures in your installation. DO NOT EXCEED DRIVER WATTAGE. See table below.

NON-DIMMABLE DRIVERS		DIMMABLE DRIVERS	
Cat. No.	Watts	Cat. No.	Watts
DLD-17-120	17	DLD-17-120 (-DIM)	17
DLD-25	25	DLD-25 (-DIM)	25
DLD-80-120	80	DLD-60 (-DIM)	60
DLD-100	100	DLD-100 (-DIM)	100



WARRANTY

Juno Lighting Group warrants that its products are free from defects in material and workmanship. Juno Lighting Group's obligation is expressly limited to repair or replacement, without charge, at Juno Lighting Group's factory after prior written return authorization has been granted. This warranty shall not apply to products which have been altered or repaired outside of Juno Lighting Group's factory. This warranty is in lieu of all other warranties, expressed or implied, and without limiting the generality of the foregoing phrase, excludes any implied warranty of merchantability. Also, there are no warranties which extend beyond the description of the product on the company's literature setting forth terms of sale.

Product Services Phone (888) 387-2212

9100-127-1174-99 © 2009 Juno Printed in Mexico Rev 1 (11/09) P2596 pg 1 of 1